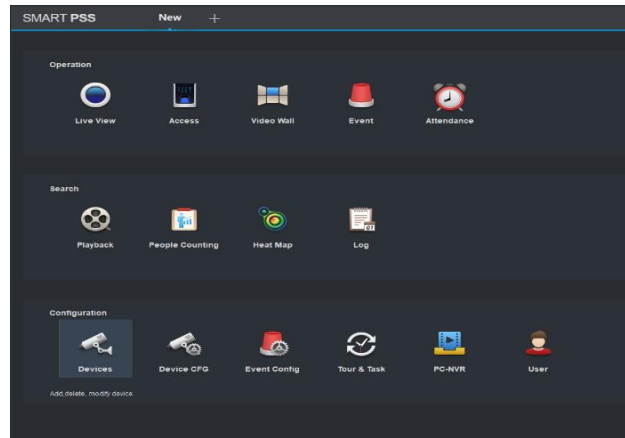
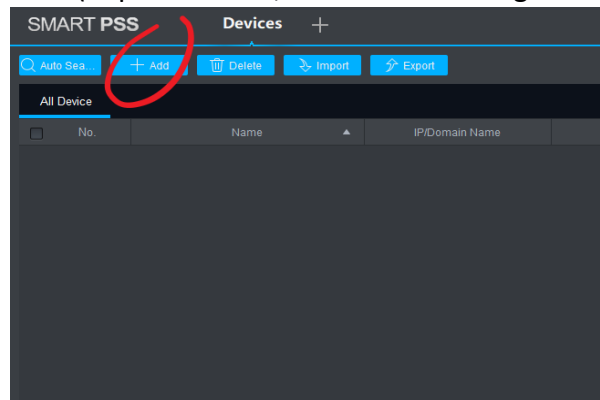


Desktop & Laptop Setup

1. Once you have finished installing “Smart PSS” on to your Desktop/Laptop, Find Icon labeled Devices (Bottom, Left)



2. Page Two select **+Add** (Top Blue Icons, Second Left To Right)



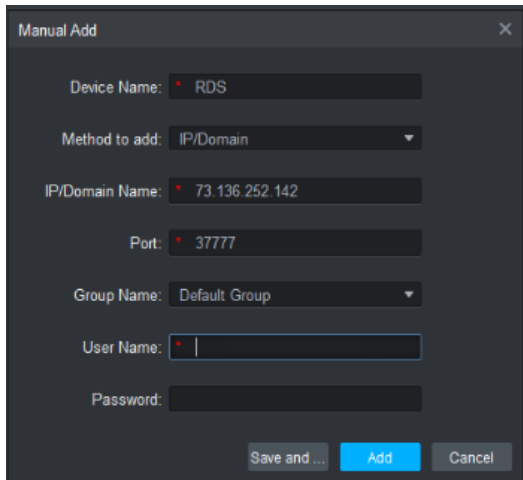
3. Page Three insert all required information.

Device Name: RDS

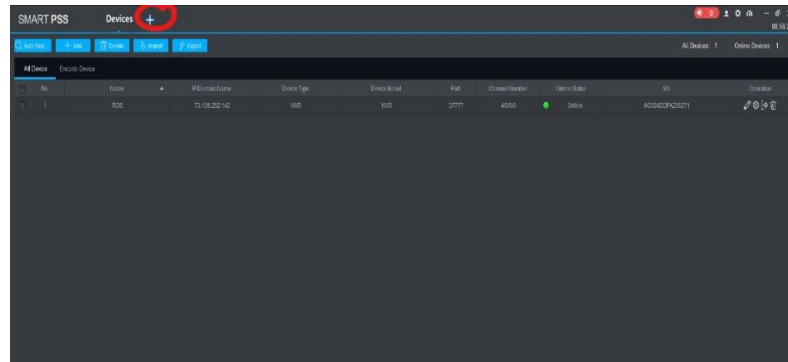
IP/Domain : 73.136.252.142 (no spaces between numbers and dots.)

ID And Password will be provided to you by RDS Staff.

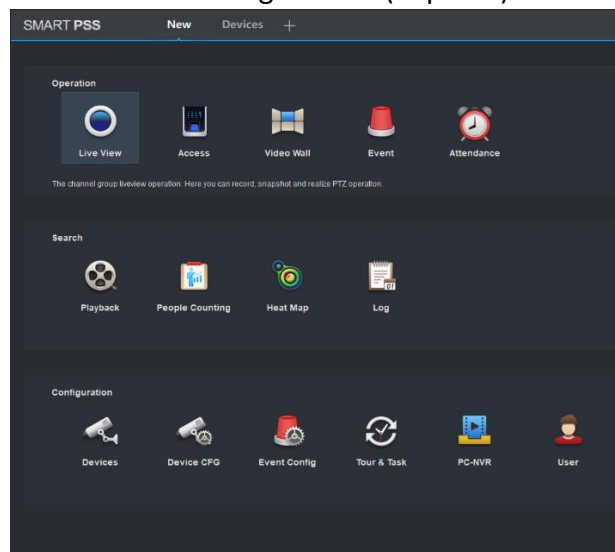
Once all info is filled out, select **ADD**



4. Select + Sign as shown on image below.



5. Click on **LIVE VIEW** as shown on image below (Top Left).



6. Double Click pm **RDS** and you will have live view. Double click on camera to maximized screen view.

